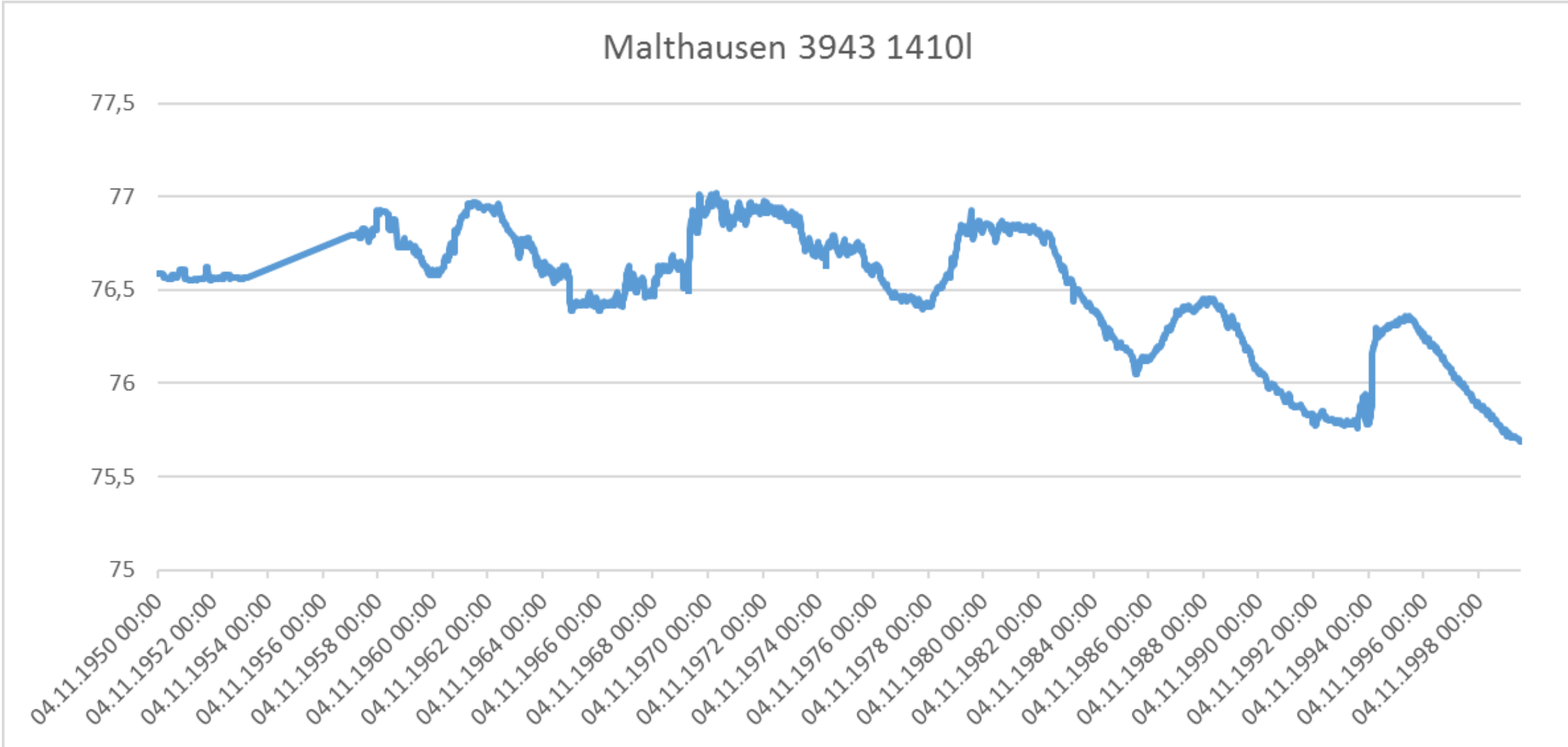


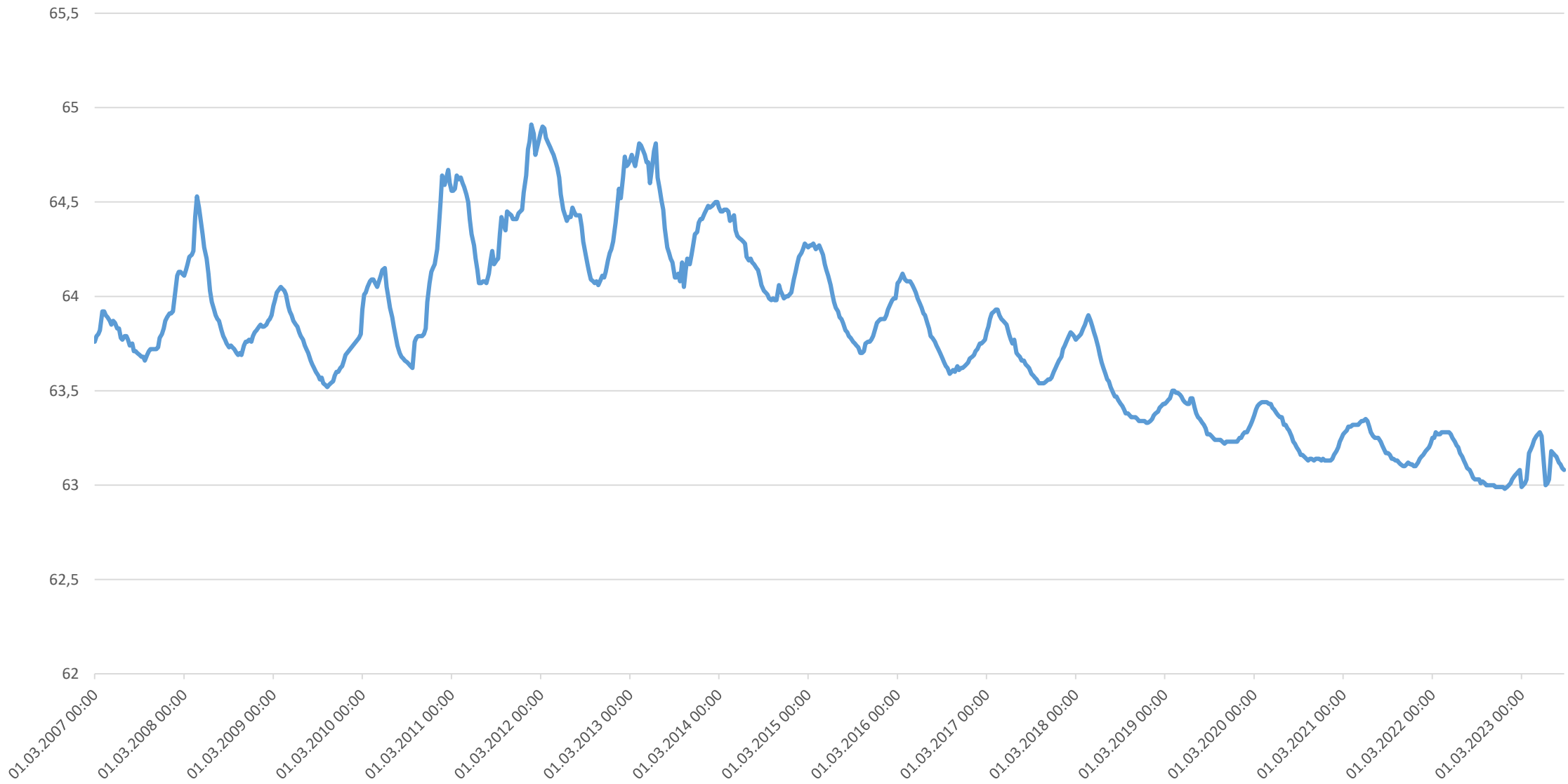
# Malthausen 3943 1410l

77,5  
77  
76,5  
76  
75,5  
75

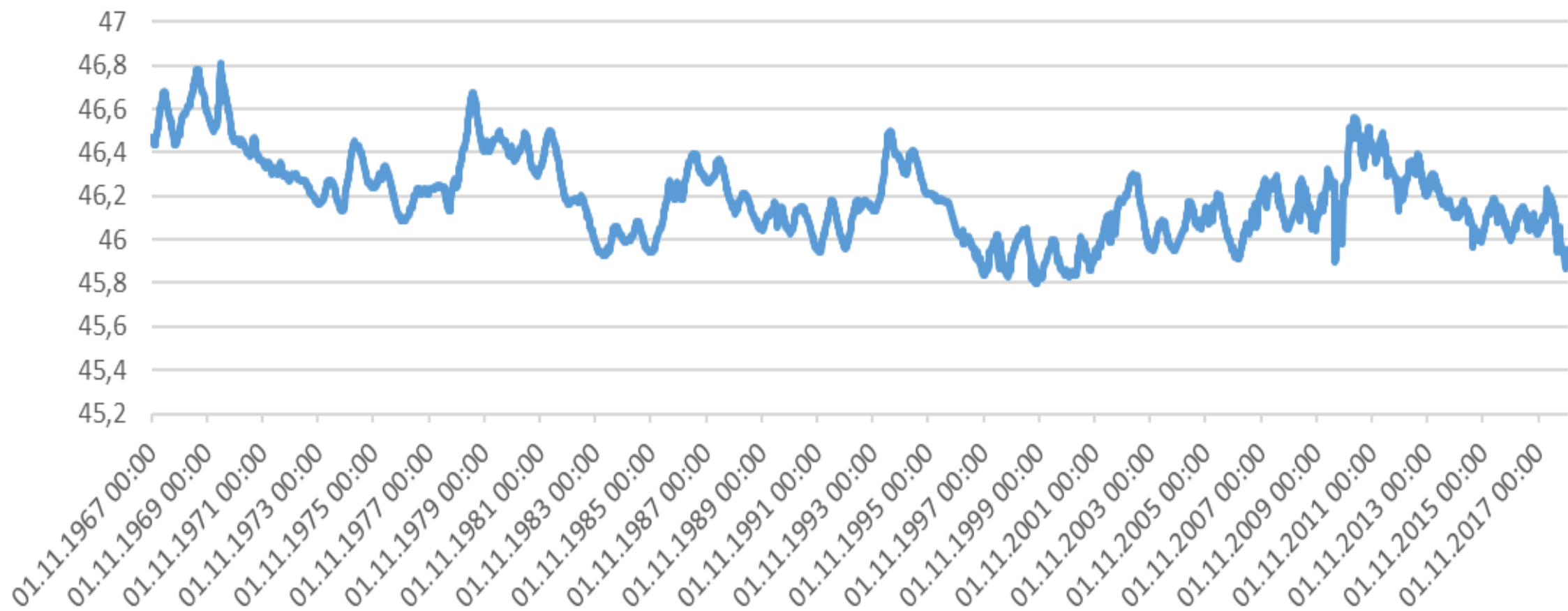
04.11.1950 00:00  
04.11.1952 00:00  
04.11.1954 00:00  
04.11.1956 00:00  
04.11.1958 00:00  
04.11.1960 00:00  
04.11.1962 00:00  
04.11.1964 00:00  
04.11.1966 00:00  
04.11.1968 00:00  
04.11.1970 00:00  
04.11.1972 00:00  
04.11.1974 00:00  
04.11.1976 00:00  
04.11.1978 00:00  
04.11.1980 00:00  
04.11.1982 00:00  
04.11.1984 00:00  
04.11.1986 00:00  
04.11.1988 00:00  
04.11.1990 00:00  
04.11.1992 00:00  
04.11.1994 00:00  
04.11.1996 00:00  
04.11.1998 00:00



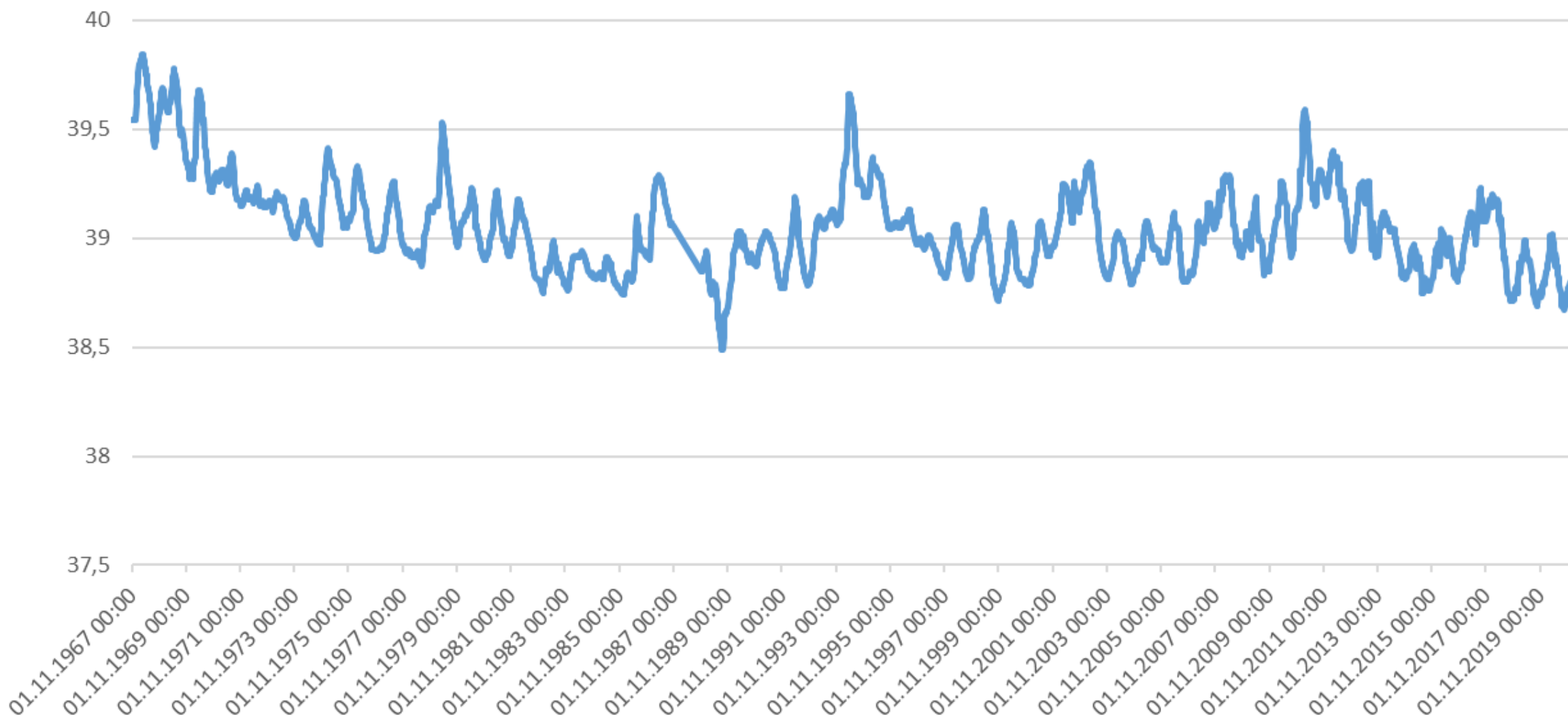
# GW Grüna 3944 1115



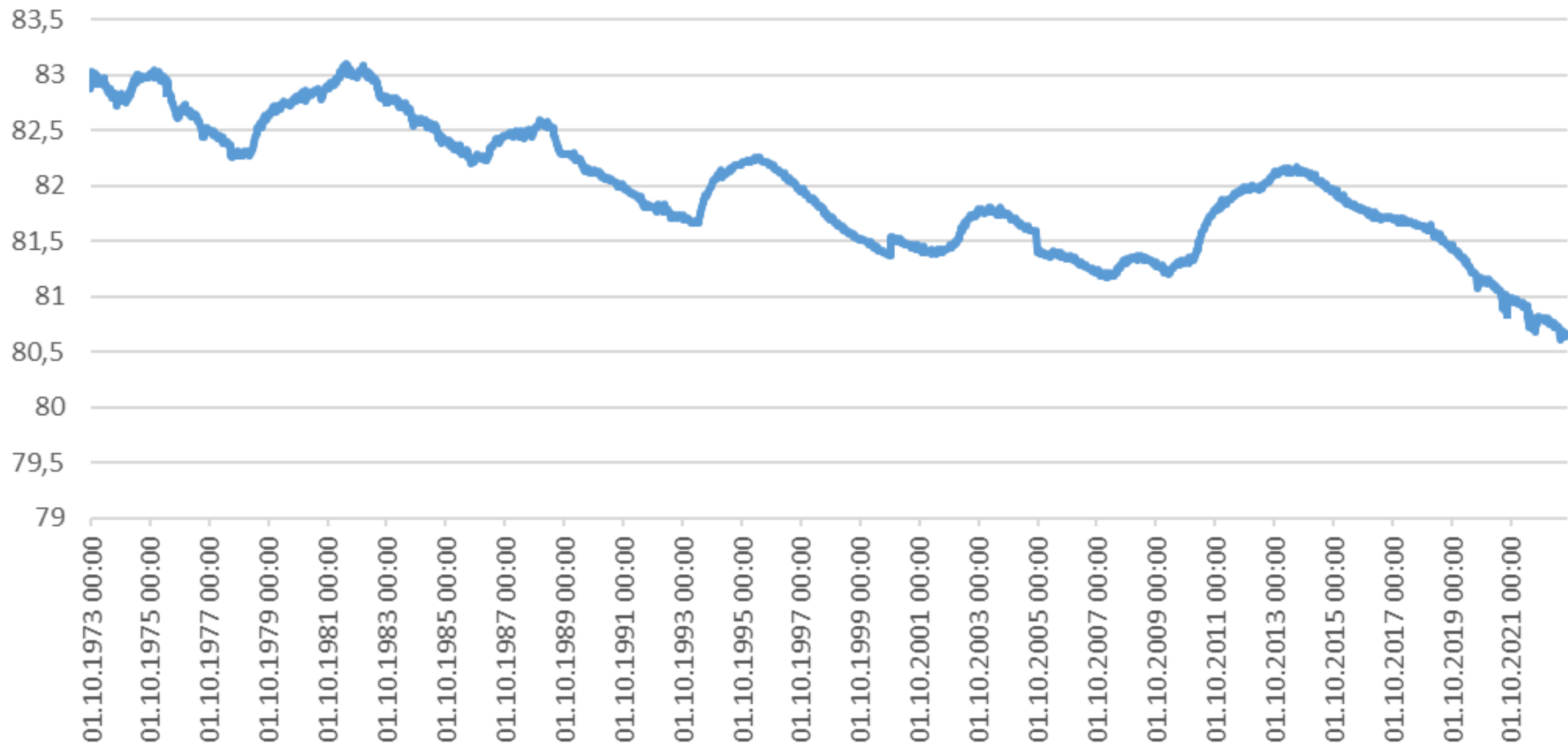
# Zülichendorf 3844\_1480

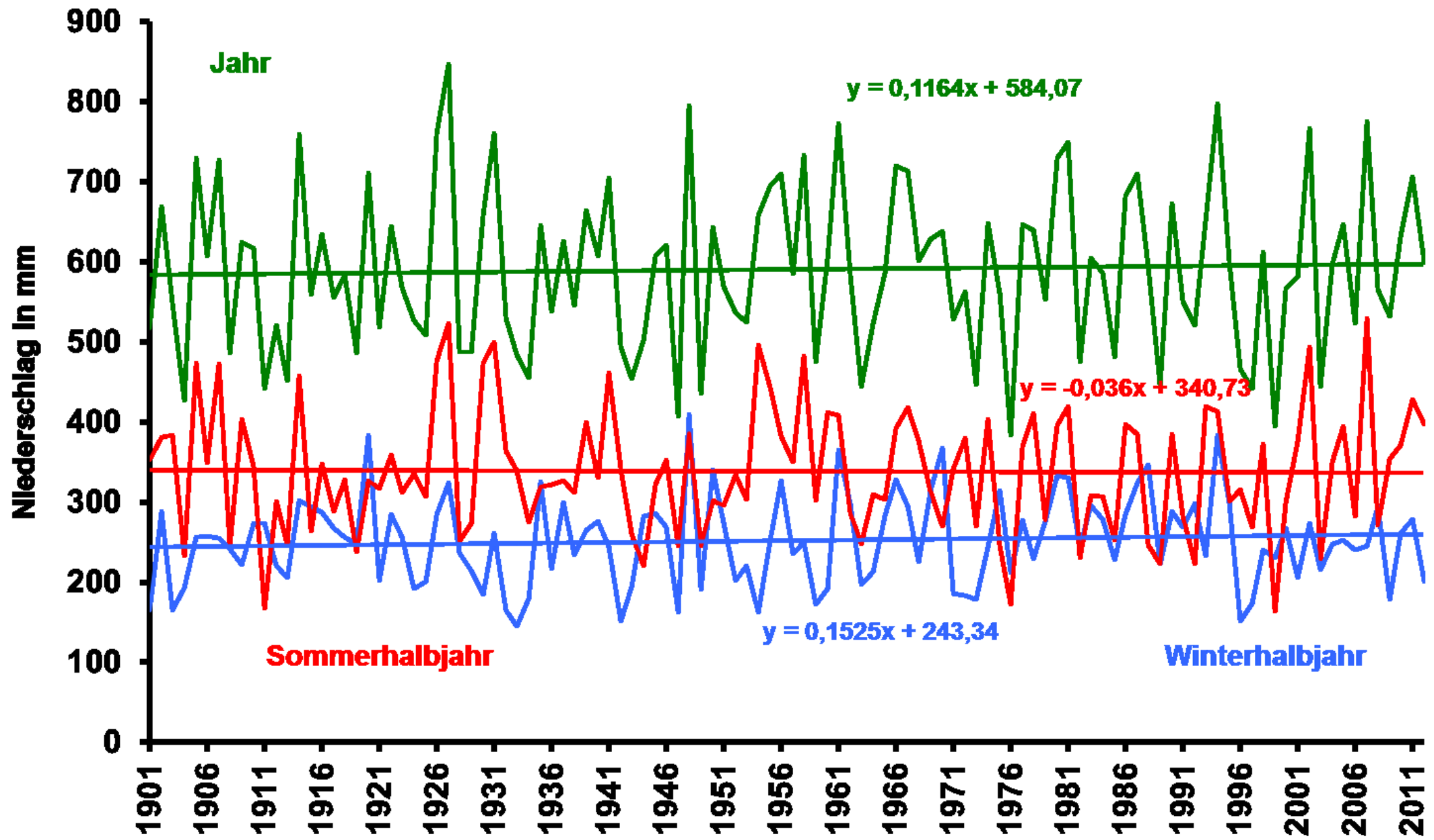


# Hennickendorf\_3844\_1742



# Kaltenborn 4043\_1025





**Jahr**

$$y = 0,1164x + 584,07$$

**Sommerhalbjahr**

$$y = -0,036x + 340,73$$

$$y = 0,1525x + 243,34$$

**Winterhalbjahr**

